



SPEKTRUM SMART LIGHTING

APP GUIDE



AMERICAN LIGHTING
BRIGHT IDEAS • INNOVATIVE SOLUTIONS

Downloading the Spektrum Smart Lighting App

Download the free Spektrum Smart Lighting app from the App Store or Google play. You can also use the QR code below for iOS and Android.



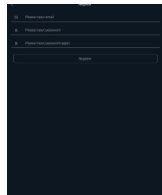
Getting Started

What you need:

- A WiFi router supporting 2.4 GHz bandwidth.
- A smartphone or tablet with WiFi capability and Bluetooth Wireless Technology

Open the Spektrum Smart Lighting app.

Create a user account by selecting "Create Account" in the bottom left hand corner of the screen. Fill in the requested information and select "Register".



Syncing a Lighting Device

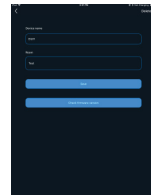
Make sure the intended device has been plugged in and powered on.

- From the home screen, select "Add device"
- Select the type of device (light or remote)
- Once selected, the app will scan for available devices. If none appear, ensure the device is powered on and re-scan by selecting the refresh icon in the top right hand corner.
- Select the device to be synced, then select "Binding" at the bottom of the screen
- Once complete, the screen will show 100%, then select "Home"
- The synced device will be available in the list of devices on the "Home" screen. Swipe down to refresh the list of devices.



Controlling a Lighting Device

- Tap the device's icon to turn On/Off
- To control or edit a device, press and hold the device's icon
- Use the color wheel or dimming/tuning sliders to control the light's output settings
- Edit the device's name or room by selecting the gear wheel in the top right hand corner



Home Screen
View all active devices



Scene Control
Create and set scenes



Schedule Control
Create and set schedules



Settings
Settings



Rooms
Create and manage rooms



Color Control
Color and brightness control



Picture Color Control
Select colors from pictures



Music
Lights react to music on device



Microphone
Lights react to sounds from mic



Favorite
Save a favorite color setting

Troubleshooting

- 1) Cannot connect to lighting device
 - Ensure Bluetooth signal is enabled
 - Check if the lighting device is already synced to another user's account. Each lighting device can only be synced to one account at a time.
 - Turn off the Spektrum Smart Lighting App. Turn off your smart device's Bluetooth signal, then turn it back on. Turn the Spektrum Smart Lighting App back on again.
 - Swipe down on the device management page to refresh the list of devices.
 - Turn off your smart device then turn it back on again.
 - Reset the lighting device by following the instructions included with the device.
 - Ensure your smart device is within range of a strong WiFi signal
- 2) The app is not functioning correctly.
 - Log out of the Spektrum Smart Lighting App. Wait 1 minute. Open the app again.
 - Ensure the app is using the most up-to-date version: Log-out of the Spektrum Smart App.

Using the gateway/hub

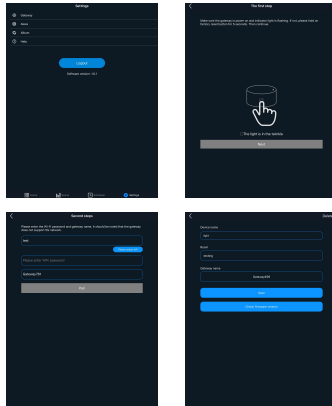
What you need:

- SPK-HUB Spektrum Smart Hub
- A wifi router supporting 2.4 GHz bandwidth
- A smartphone or tablet with EFiFi capability and Bluetooth Wireless Technology
- A digital assistant such as Amazon Alexa or Google Home

Ensure all devices are powered on and smartphone or tablet is connected to a strong 2.4 GHz WiFi signal.

From the Spektrum App home page, select "Settings" on the bottom right of the page. Select "Gateway" from the list of options. Press and hold the reset button on the side of the gateway for at least 5 seconds. The light should begin blinking. On the app, select the "+" icon in the upper right hand corner of the page. Indicate that the light is blinking by checking the indicator box, then select "Next". The app will prompt you to enter the password for the connected WiFi signal. Once entered, select "Pair". You can now rename the gateway by selecting and holding the appropriate gateway from the populated list.

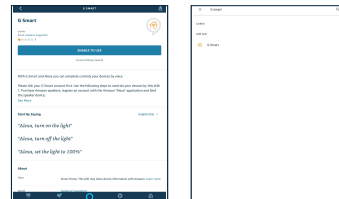
Once paired, ensure all devices intended to be used in conjunction with the gateway are set to match the gateway by opening the device's control screen and selecting the appropriate gateway from the drop-down.



Digital Assistants

The Spektrum Smart Hub is compatible with either Amazon Alexa or Google Home digital assistants. Follow the Amazon Alexa or Google Home instructions to set-up your digital assistant device.

In order to use the Spektrum Smart app with a digital assistant, you must link with the "G Smart" skill. This can be done directly from the Amazon Alexa or Google Home apps.



Amazon Alexa

From the Amazon Alexa app, search for the "G Smart" skill under "Skills & Games". Once the "G Smart" skill is found, select "Enable", then enter the log-in credentials used for the Spektrum App to complete authorization.

After the skill authorization is complete, return to the skill interface and select "Discover Devices". Amazon Alexa will automatically synchronize rooms that have already been created in the Spektrum Smart App. Alexa controls devices by name, so ensure device and room names are clearly pronounced and easy to remember.

Examples of Amazon Alexa Commands:

- Alexa, turn on "light"
- Alexa, turn off "light"
- Alexa, set the brightness of "light" to XX%
- Alexa, set the color temperature of "light" to warm white/cool white/50%
- Alexa, turn the "light" to red/green/blue/etc

Google Home

From the Google Home app, select "Add" from the main Google Home home page, then "Set Up Device" to enter the "Settings" page. Select "Have something already set up?", then search for the "G Smart" skill. Once the "G Smart" skill is found, select "Enable", then enter the log-in credentials used for the Spektrum App to complete authorization.

After the skill authorization is complete, return to the skill interface and select devices to be controlled via Google Home, then organize them into "homes" and "rooms". Google Home controls devices by name, so ensure device and room names are clearly pronounced and easy to remember.

Examples of Google Home Commands:

- Ok Google, turn on "light"
- Ok Google, turn off "light"
- Ok Google, set the brightness of "light" to XX%
- Ok Google, set the color temperature of "light" to warm white/cool white/50%
- Ok Google, turn the "light" to red/green/blue/etc

Troubleshooting

- 1) The Smart Hub will not sync with the app.
 - For best results, the Smart Hub should be no more than 2 meters away from the WiFi router when syncing.
 - Ensure your smart device is within range of a strong WiFi signal
2. My digital assistant will not recognize the lighting devices.
 - Ensure the smart device, digital assistant, and smart hub have all been linked to the same 2.4 GHz WiFi network.
 - Ensure the digital assistant's skill has been enabled and is synced with the same Spektrum Smart App account as your devices.



SPEKTRUM
SMART LIGHTING

AMERICAN LIGHTING

©2019 American Lighting, Inc. REV1911
www.AmericanLighting.com